

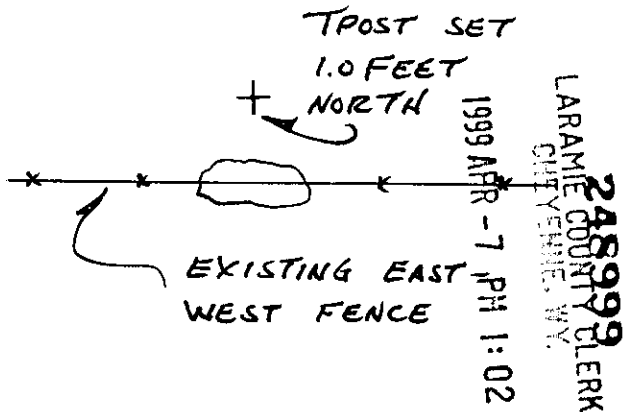
State of Wyoming Corner Record

(In compliance with the *CORNER PERPETUATION AND FILING ACT*, Wyoming Statutes, 1997 Section 33-29-140 et. seq., and the Rules and Regulations of the Board of Professional Engineers and Professional Land Surveyors)

Reverse side of this form may be used if more space is needed.

Record of original survey and citation of source of historical information (if corner is lost or obliterated). Description of corner monumentation evidence found and/or monument and accessories established to perpetuate the location of this corner. Sketch of relative location of monument, accessories, and reference points with course and distance to adjacent corner(s) (if determined in this survey). Method and rationale for re-establishment of lost or obliterated corner.

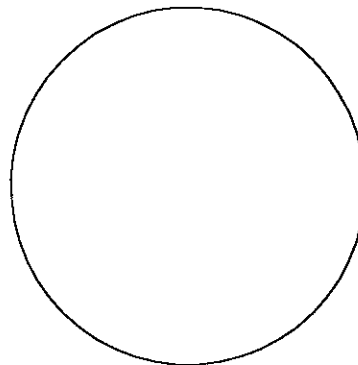
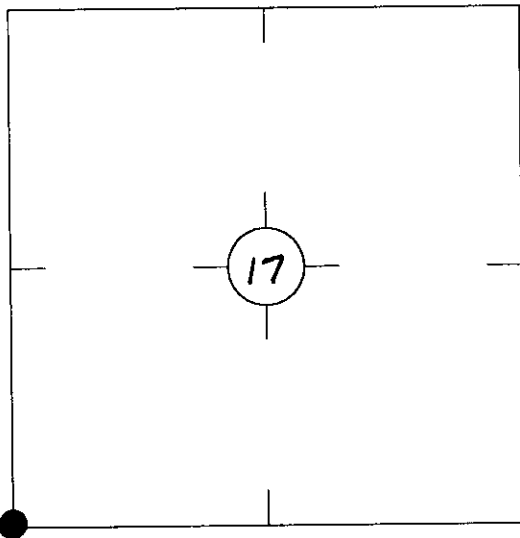
WHITE GRANITE STONE
11" x 7" x 8" ABOVE GROUND,
SET FIRM WITH 2 NOTCHES
ON WEST & 3 NOTCHES ON
SOUTH. STONE FITS, NOT
SURE WHY NOTCHES ARE
THIS WAY.



Project Coordinate: North 182550.35

Project Coordinate: East 722862.67

Monument location



Monument Inscription

Date of Field Work: AUG 14, 1998

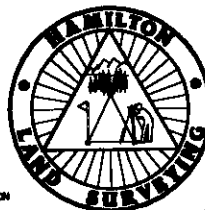
Office Reference: IME 8418RS, PT.#1145

Cross Index Plat

	1	2	3	4	5	6	7	8	9	10	11	12	13	14	15	16	17	18	19	20	21	22	23	24	25		
A																											A
B																											B
C		6	5	4	3	2	1																				C
D																											D
E																											E
F																											F
G		7	8	9	10	11	12																				G
H																											H
J																											J
K																											K
L		18	17	16	15	14	13																				L
M																											M
N																											N
O																											O
P		19	20	21	22	23	24																				P
Q																											Q
R																											R
S																											S
T		30	29	28	27	26	25																				T
U																											U
V																											V
W																											W
X		31	32	33	34	35	36																				X
Y																											Y
Z																											Z
	1	2	3	4	5	6	7	8	9	10	11	12	13	14	15	16	17	18	19	20	21	22	23	24	25		

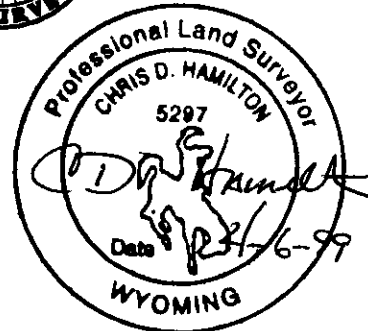
Firm/Agency, Address

this corner record provided by:
**HAMILTON
LAND
SURVEYING**
102 West Ramshorn, Ste. 201
Dubois, WY: 307-455-2070
A WYOMING COMPANY PROVIDING
COMMERCIAL - RESIDENTIAL - INDUSTRIAL
OIL & GAS - WATER RIGHTS - CONSTRUCTION
AND SUBDIVISION LAND SURVEYING SERVICES



This corner record was prepared by me or under my direction and supervision.

SEAL & SIGNATURE



County: LARAMIE, Wyoming

Corner Name: SECTION CORNER, Section: 17, T 12N, R 67W, 6TH P.M., Cross-Index No.: N-5

SBRPEPLS/PLSW: March 1994; PLSW January 1998